

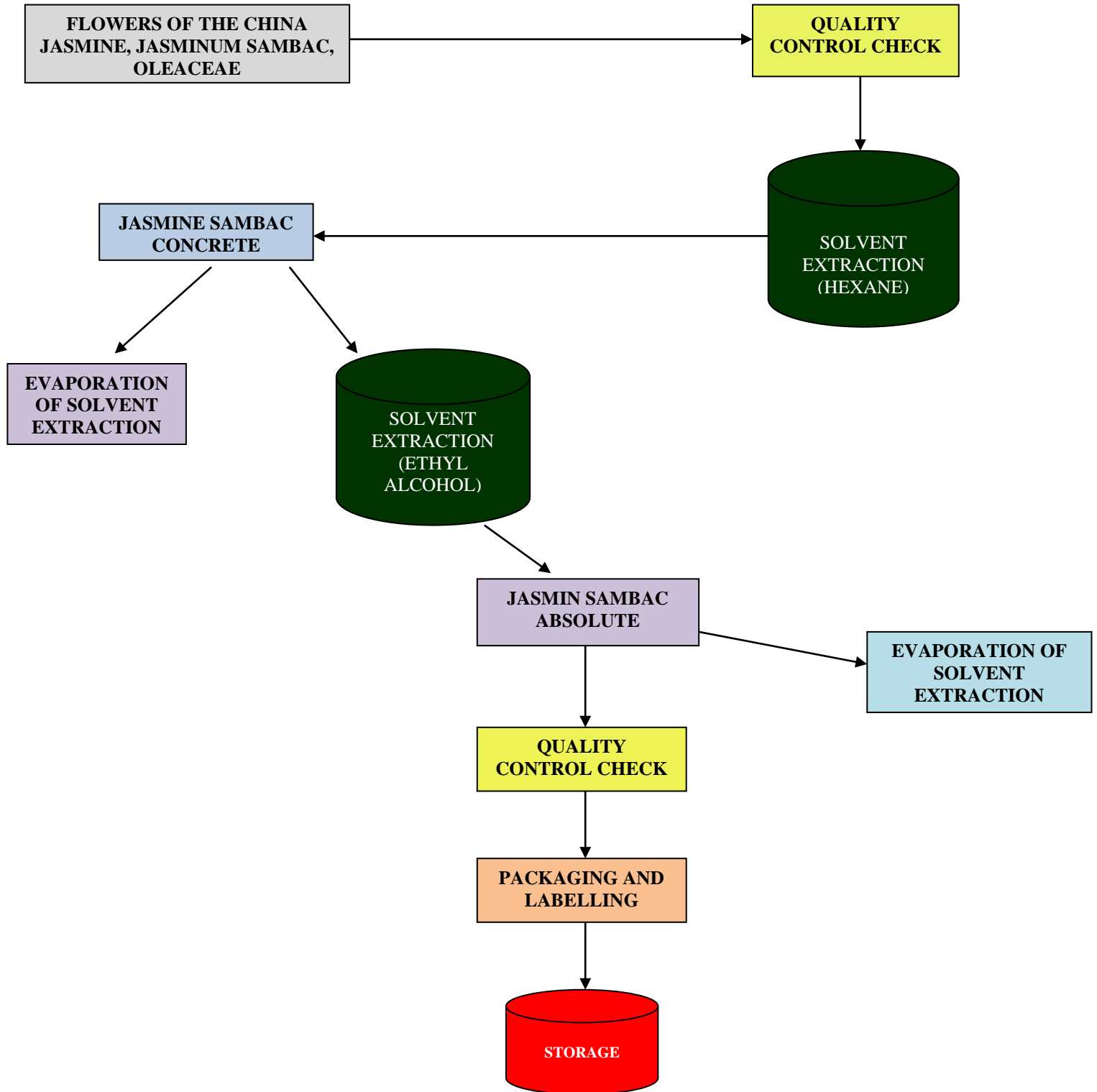


## Certificate of Analysis

| PRODUCT DETAILS  |   |                  |
|--|---|------------------|
| Product Name   | JASMINE ABSOLUTE SAMBAC   |                  |
| Product Code   | AOJASMSAMB  |                  |
| Tariff Number  | 33012941  |                  |
| Country of Origin  | India   |                  |
| Expiry Date  |   |                  |
| Batch Number   | 4468404   |                  |
| Best Before Date   | May 2025  |                  |
| Identification   | CAS No: 91770-14-8  | EC No: 294-797-4 |
|  | FEMA: 2598  |                  |
| PHYSICAL AND CHEMICAL CHARACTERISTIC   |   |                  |
|  | SPECIFICATION RANGE   | RESULTS          |
| Appearance   | Viscous Liquid  | Conforms         |
| Colour   | Pale Reddish to Red-Brown   | Conforms         |
| Odour  | Characterisitic   | Conforms         |
| Refractive Index @ 20°C  | 1.480 - 1.516   | 1.5035           |
| STORAGE AND SHELF LIFE   |   |                  |
| Storage  | Store in tightly closed container with minimum headspace in a cool, dark and dry place. |                  |
| Shelf Life   | 3 years unopened and stored as above.   |                  |
| <p><b>DISCLAIMER:</b> This information relates only to the specific material designated and may not be valid for such material used in combination with any other materials or in any process. Such information is, to the best of the Company's knowledge and belief, accurate and reliable as of the date indicated. However, no warranty, guarantee or representation is made to its accuracy, reliability or completeness. It is the users responsibility to satisfy himself as to the suitability of such information for his own particular use. Where we make a declaration that allergenic material are not present in any</p> |   |                  |

product, this statement is made assuming reasonable levels of detection. It is impossible to guarantee the "absolute absence" of any material. It is the ultimate responsibility of the customer to ensure the safety of the intended final product containing this material, by carrying out additional tests if necessary

## PROCESSING – JASMIN SAMBAC ABSOLUTE FLOW CHART





## SAFETY DATA SHEET JASMINE ABSOLUTE SAMBAC

### SECTION 1: Identification of the substance/mixture and of the company/undertaking

#### 1.1. Product identifier

**Product name** JASMINE ABSOLUTE SAMBAC

**CAS number** 91770-14-8

**EC number** 294-797-4

**FEMA No:** 2598

#### 1.2. Relevant identified uses of the substance or mixture and uses advised against

**Identified uses** Industrial

#### 1.3. Details of the supplier of the safety data sheet

**Supplier** Madar Corporation Limited  
19 - 20 Sandleheath Industrial Estate  
Fordingbridge  
SP6 1PA

Tel. +44 1425 655 555 (Opening Hours Mon - Fri 9.00am - 5.00pm)  
e-mail [technical@madarcorporation.co.uk](mailto:technical@madarcorporation.co.uk)

#### 1.4. Emergency telephone number

### SECTION 2: Hazards identification

#### 2.1. Classification of the substance or mixture

##### Classification (EC 1272/2008)

**Physical hazards** Not Classified

**Health hazards** Skin Irrit. 2 - H315 Eye Dam. 1 - H318 Skin Sens. 1 - H317

**Environmental hazards** Aquatic Chronic 2 - H411

**Human health** Causes skin irritation. Causes serious eye damage. May cause an allergic skin reaction.

**Environmental** Toxic to aquatic life with long lasting effects.

#### 2.2. Label elements

**EC number** 294-797-4

##### Hazard pictograms



## JASMINE ABSOLUTE SAMBAC

|   |  |
|---|--|
| <b>Signal word</b>                            | Danger   |
| <b>Hazard statements</b>                      | H315 Causes skin irritation.<br>H318 Causes serious eye damage.<br>H317 May cause an allergic skin reaction.<br>H411 Toxic to aquatic life with long lasting effects.  |
| <b>Precautionary statements</b>               | P261 Avoid breathing vapour/ spray.<br>P273 Avoid release to the environment.<br>P280 Wear protective gloves/ protective clothing/ eye protection/ face protection.<br>P302+P352 IF ON SKIN: Wash with plenty of water.<br>P305+P351+P338 IF IN EYES: Rinse cautiously with water for several minutes. Remove contact lenses, if present and easy to do. Continue rinsing.<br>P391 Collect spillage.<br>P501 Dispose of contents/ container in accordance with national regulations. |
| <b>Contains</b>                               | Indole, Linalool   |
| <b>Supplementary precautionary statements</b> | P264 Wash contaminated skin thoroughly after handling.<br>P272 Contaminated work clothing should not be allowed out of the workplace.<br>P310 Immediately call a POISON CENTER/ doctor.<br>P321 Specific treatment (see medical advice on this label).<br>P332+P313 If skin irritation occurs: Get medical advice/ attention.<br>P333+P313 If skin irritation or rash occurs: Get medical advice/ attention.<br>P362+P364 Take off contaminated clothing and wash it before reuse.   |

### 2.3. Other hazards

#### SECTION 3: Composition/information on ingredients

#### 3.2. Mixtures

|   |               |
|---|---------------|
| <b>Benzyl Acetate</b><br>CAS number: 140-11-4                      EC number: 205-399-7                         | <b>10-25%</b> |
| <b>Classification</b><br>Aquatic Chronic 3 - H412   |               |
| <b>Methyl Anthranilate</b><br>CAS number: 134-20-3                      EC number: 205-132-4                    | <b>5-15%</b>  |
| <b>Classification</b><br>Eye Irrit. 2 - H319  |               |
| <b>Indole</b><br>CAS number: 120-72-9                      EC number: 204-420-7                                 | <b>1-8%</b>   |
| <b>Classification</b><br>Acute Tox. 4 - H302<br>Acute Tox. 3 - H311<br>Eye Dam. 1 - H318<br>Skin Sens. 1 - H317 |               |

## JASMINE ABSOLUTE SAMBAC

|  |                      |             |
|--|----------------------|-------------|
| <b>Linalool</b>  |                      | <b>0-8%</b> |
| CAS number: 78-70-6  | EC number: 201-134-4 |             |
| <b>Classification</b><br>Skin Irrit. 2 - H315<br>Eye Irrit. 2 - H319<br>Skin Sens. 1 - H317        |                      |             |
| <b>benzyl alcohol</b>  |                      | <b>3-5%</b> |
| CAS number: 100-51-6   | EC number: 202-859-9 |             |
| <b>Classification</b><br>Acute Tox. 4 - H302<br>Acute Tox. 4 - H332                                |                      |             |
| <b>benzyl benzoate</b>   |                      | <b>0-3%</b> |
| CAS number: 120-51-4   | EC number: 204-402-9 |             |
| M factor (Acute) = 1   |                      |             |
| <b>Classification</b><br>Acute Tox. 4 - H302<br>Aquatic Acute 1 - H400<br>Aquatic Chronic 2 - H411 |                      |             |

The Full Text for all R-Phrases and Hazard Statements are Displayed in Section 16.

### SECTION 4: First aid measures

#### 4.1. Description of first aid measures

|                     |   |
|---------------------|---|
| <b>Inhalation</b>   | Remove person to fresh air and keep comfortable for breathing. Get medical attention if any discomfort continues.                                 |
| <b>Ingestion</b>    | Rinse mouth thoroughly with water. Get medical attention if any discomfort continues.   |
| <b>Skin contact</b> | Remove contamination with soap and water or recognised skin cleansing agent. Continue to rinse for at least 15 minutes and get medical attention. |
| <b>Eye contact</b>  | Remove contact lenses, if present and easy to do. Continue rinsing. Continue to rinse for at least 15 minutes and get medical attention.          |

#### 4.2. Most important symptoms and effects, both acute and delayed

|                            |  |
|----------------------------|--|
| <b>General information</b> | No further information available at this time. |
|----------------------------|--|

#### 4.3. Indication of any immediate medical attention and special treatment needed

### SECTION 5: Firefighting measures

#### 5.1. Extinguishing media

|                                       |   |
|---------------------------------------|---|
| <b>Suitable extinguishing media</b>   | Extinguish with foam, carbon dioxide or dry powder. |
| <b>Unsuitable extinguishing media</b> | For safety reasons do not use full water jet.       |

#### 5.2. Special hazards arising from the substance or mixture

## JASMINE ABSOLUTE SAMBAC

**Hazardous combustion products** May produce Carbon Dioxide and unidentified organic compounds.

### 5.3. Advice for firefighters

**Protective actions during firefighting** Avoid breathing fire gases or vapours. Control run-off water by containing and keeping it out of sewers and watercourses.

**Special protective equipment for firefighters** Wear full protective clothing

## **SECTION 6: Accidental release measures**

### 6.1. Personal precautions, protective equipment and emergency procedures

**Personal precautions** Avoid contact with skin, eyes and clothing. If ventilation is inadequate, suitable respiratory protection must be worn. Keep unnecessary and unprotected personnel away from the spillage. No smoking, sparks, flames or other sources of ignition near spillage. Wear protective clothing and gloves.

### 6.2. Environmental precautions

**Environmental precautions** Avoid discharge into drains and the aquatic environment. Dangerous for the environment. Harmful to aquatic life with long lasting effects.

### 6.3. Methods and material for containment and cleaning up

**Methods for cleaning up** Absorb with inert, non-combustible, inorganic absorbent material (e.g. sand, earth, diatomaceous earth, vermiculite). Sweep up and remove to an approved disposal container. Do not absorb in sawdust or other combustible absorbents. For any concern related to disposal consult section 13. Clear up spills immediately and dispose of waste safely. Dispose of contents/container in accordance with local regulations. Do not reuse empty containers.

### 6.4. Reference to other sections

## **SECTION 7: Handling and storage**

### 7.1. Precautions for safe handling

**Usage precautions** Apply good manufacturing practice and industrial hygiene practices. Keep containers sealed when not in use. Avoid breathing vapours. Avoid contact with skin, eyes and clothing. Do not eat, drink or smoke when using this product. Good personal hygiene procedures should be implemented. Keep away from heat, hot surfaces, sparks, open flames and other ignition sources. No smoking.

### 7.2. Conditions for safe storage, including any incompatibilities

**Storage precautions** Store in tightly-closed, original container in a dry, cool and well-ventilated place. Keep away from flammable and combustible materials.

### 7.3. Specific end use(s)

## **SECTION 8: Exposure controls/Personal protection**

### 8.1. Control parameters

**Benzyl Acetate (CAS: 140-11-4)**

## JASMINE ABSOLUTE SAMBAC

|             |  |
|-------------|--|
| <b>DNEL</b> | Workers - Inhalation; Long term systemic effects: 21.9 mg/m <sup>3</sup>           |
|             | Workers - Inhalation; Short term systemic effects: 43.8 mg/m <sup>3</sup>          |
|             | Workers - Dermal; Long term systemic effects: 6.25 mg/kg, bw/day                   |
|             | Workers - Dermal; Short term systemic effects: 12.5 bw/day, mg/kg                  |
|             | General population - Inhalation; Long term systemic effects: 5.5 mg/m <sup>3</sup> |
|             | General population - Inhalation; Short term systemic effects: 11 mg/m <sup>3</sup> |
|             | General population - Dermal; Long term systemic effects: 3.125 bw/day, mg/kg       |
|             | General population - Dermal; Short term systemic effects: 6.25 bw/day, mg/kg       |
|             | General population - Oral; Long term systemic effects: 3.125 mg/kg, bw/day         |
|             | General population - Oral; Short term systemic effects: 6.25 mg/kg, bw/day         |

|             |  |
|-------------|--|
| <b>PNEC</b> | - Fresh water; Short term 0.004 mg/l             |
|             | - Intermittent release, Fresh water; 0.04 mg/l   |
|             | - marine water; Short term 0 mg/l                |
|             | - STP; Short term 8.55 mg/l                      |
|             | - Sediment (Freshwater); Short term 0.114 mg/kg  |
|             | - Sediment (Marinewater); Short term 0.011 mg/kg |
|             | - Soil; Short term 0.021 mg/kg                   |

### Methyl Anthranilate (CAS: 134-20-3)

|             |  |
|-------------|--|
| <b>DNEL</b> | Workers - Inhalation; Long term systemic effects: 5.28 mg/m <sup>3</sup>           |
|             | Workers - Dermal; Long term systemic effects: 1.5 bw/day, mg/kg                    |
|             | General population - Inhalation; Long term systemic effects: 1.3 mg/m <sup>3</sup> |
|             | General population - Dermal; Long term systemic effects: 0.75 bw/day, mg/kg        |
|             | General population - Oral; Long term systemic effects: 0.75 mg/kg, bw/day          |
| <b>PNEC</b> | - Fresh water; Short term 0.009 mg/l   |
|             | - Intermittent release, Fresh water; 0.091 mg/l                                    |
|             | - marine water; Short term 0.001 mg/l  |

### Linalool (CAS: 78-70-6)

|             |   |
|-------------|---|
| <b>DNEL</b> | Workers - Dermal; Short term systemic effects: 5 mg/kg                              |
|             | Workers - Inhalation; Short term systemic effects: 16.5 mg/m <sup>3</sup>           |
|             | Workers - Dermal; Long term systemic effects: 2.5 mg/kg                             |
|             | Workers - Inhalation; Long term systemic effects: 2.8 mg/m <sup>3</sup>             |
|             | General population - Oral; Short term systemic effects: 1.5 mg/kg                   |
|             | General population - Dermal; Short term systemic effects: 2.5 mg/kg                 |
|             | General population - Inhalation; Short term systemic effects: 4.1 mg/m <sup>3</sup> |
|             | General population - Oral; Long term systemic effects: 0.2 mg/kg                    |
|             | General population - Dermal; Long term systemic effects: 1.25 mg/kg                 |
|             | General population - Inhalation; Long term systemic effects: 0.7 mg/m <sup>3</sup>  |
|             | - ; :   |
|             | - ; :   |
| <b>PNEC</b> | - STP; Short term 10 mg/l   |
|             | - Soil; Short term 0.327 mg/kg  |
|             | - Intermittent release; Short term 2 mg/l   |
|             | - Fresh water; Short term 0.2 mg/l  |
|             | - marine water; Short term 0.02 mg/l  |
|             | - Sediment (Freshwater); Short term 2.22 mg/kg                                      |
|             | - Sediment (Marinewater); Short term 0.222 mg/kg                                    |

## 8.2. Exposure controls

## JASMINE ABSOLUTE SAMBAC

### Protective equipment



**Appropriate engineering controls**

Provide eyewash station Provide adequate ventilation.

**Personal protection**

Use personal protection according to Directive 89/686/EEC

**Eye/face protection**

Approved safety goggles.

**Hand protection**

Chemical resistant gloves (PVC)

**Other skin and body protection**

Wear an apron.

**Hygiene measures**

Good personal hygiene procedures should be implemented.

**Respiratory protection**

Generally unnecessary in a well ventilated area.  
If ventilation is insufficient, respiratory protection must be worn.

**Environmental exposure controls**

Avoid discharging into drains.

### SECTION 9: Physical and chemical properties

#### 9.1. Information on basic physical and chemical properties

|                         |                             |
|-------------------------|-----------------------------|
| <b>Appearance</b>       | Viscous liquid.             |
| <b>Colour</b>           | Pale Reddish. to Red-brown. |
| <b>Odour</b>            | Characteristic.             |
| <b>Relative density</b> | 0.945 - 0.982 @ 25°C        |

#### 9.2. Other information

|                         |                      |
|-------------------------|----------------------|
| <b>Refractive index</b> | 1.480 - 1.516 @ 20°C |
|-------------------------|----------------------|

**Hydrocarbon Content**

### SECTION 10: Stability and reactivity

#### 10.1. Reactivity

|                   |                    |
|-------------------|--------------------|
| <b>Reactivity</b> | No data available. |
|-------------------|--------------------|

#### 10.2. Chemical stability

|                  |   |
|------------------|---|
| <b>Stability</b> | Stable under the prescribed storage conditions. |
|------------------|---|

#### 10.3. Possibility of hazardous reactions

|   |                    |
|---|--------------------|
| <b>Possibility of hazardous reactions</b> | No data available. |
|---|--------------------|

#### 10.4. Conditions to avoid

|                            |   |
|----------------------------|---|
| <b>Conditions to avoid</b> | Avoid heat, flames and other sources of ignition. |
|----------------------------|---|

#### 10.5. Incompatible materials

|                           |   |
|---------------------------|---|
| <b>Materials to avoid</b> | Avoid contact with the following materials: Strong oxidising agents. bases Highly reactive chemicals which may produce unknown reaction products and so cause additional hazards. |
|---------------------------|---|

#### 10.6. Hazardous decomposition products

At Origin, 19-20 Sandleheath Industrial Estate, Fordingbridge, Hampshire, SP6 1PA, UK

Tel: 01425 655555 Email: technical@madarcorporation.co.uk



## JASMINE ABSOLUTE SAMBAC

**Hazardous decomposition products** Thermal decomposition or combustion may liberate carbon oxides and other toxic gases or vapours.

### SECTION 11: Toxicological information

#### 11.1. Information on toxicological effects

##### Acute toxicity - oral

ATE oral (mg/kg) 3,125.0

##### Acute toxicity - dermal

ATE dermal (mg/kg) 3,750.0

##### Acute toxicity - inhalation

ATE inhalation (vapours mg/l) 220.0

##### Skin corrosion/irritation

Skin corrosion/irritation Causes skin irritation.

##### Serious eye damage/irritation

Serious eye damage/irritation Causes serious eye damage.

##### Skin sensitisation

Skin sensitisation May cause an allergic skin reaction.

### SECTION 12: Ecological information

#### 12.1. Toxicity

Toxicity Harmful to aquatic life with long lasting effects.

#### 12.2. Persistence and degradability

Persistence and degradability No data available.

#### 12.3. Bioaccumulative potential

#### 12.4. Mobility in soil

#### 12.5. Results of PBT and vPvB assessment

#### 12.6. Other adverse effects

### SECTION 13: Disposal considerations

#### 13.1. Waste treatment methods

**Disposal methods** Dispose of contents/container in accordance with local regulations. Do not empty into drains.  
Do not reuse empty containers.

### SECTION 14: Transport information

#### 14.1. UN number

UN No. (ADR/RID) 3082

UN No. (IMDG) 3082

UN No. (ICAO) 3082

UN No. (ADN) 3082

#### 14.2. UN proper shipping name

**Proper shipping name (ADR/RID)** ENVIRONMENTALLY HAZARDOUS SUBSTANCE, LIQUID, N.O.S.

**Proper shipping name (IMDG)** ENVIRONMENTALLY HAZARDOUS SUBSTANCE, LIQUID, N.O.S.  
BiOrigins, 19-20 Sandleheath Industrial Estate, Fordingbridge, Hampshire, SP6 1PA, UK  
Tel: 01425 655555 Email: technical@madarcorporation.co.uk

## JASMINE ABSOLUTE SAMBAC

**Proper shipping name (ICAO)** ENVIRONMENTALLY HAZARDOUS SUBSTANCE, LIQUID, N.O.S.

**Proper shipping name (ADN)** ENVIRONMENTALLY HAZARDOUS SUBSTANCE, LIQUID, N.O.S.

### 14.3. Transport hazard class(es)

|                             |    |
|-----------------------------|----|
| ADR/RID class               | 9  |
| ADR/RID classification code | M6 |
| ADR/RID label               | 9  |
| IMDG class                  | 9  |
| ICAO class/division         | 9  |
| ADN class                   | 9  |

#### Transport labels



### 14.4. Packing group

|                       |     |
|-----------------------|-----|
| ADR/RID packing group | III |
| IMDG packing group    | III |
| ICAO packing group    | III |
| ADN packing group     | III |

### 14.5. Environmental hazards

Environmentally hazardous substance/marine pollutant



### 14.6. Special precautions for user

|  |          |
|--|----------|
| EmS                                    | F-A, S-F |
| ADR transport category                 | 3        |
| Emergency Action Code                  | •3Z      |
| Hazard Identification Number (ADR/RID) | 90       |
| Tunnel restriction code                | (-)      |

### 14.7. Transport in bulk according to Annex II of MARPOL and the IBC Code

## SECTION 15: Regulatory information

### 15.1. Safety, health and environmental regulations/legislation specific for the substance or mixture

|                       |  |
|-----------------------|--|
| <b>EU legislation</b> | Regulation (EC) No 1272/2008 of the European Parliament and of the Council of 16 December 2008 on classification, labelling and packaging of substances and mixtures (as amended). |
| <b>Guidance</b>       | CHIP for everyone HSG228.  |

### 15.2. Chemical safety assessment

**JASMINE ABSOLUTE SAMBAC****SECTION 16: Other information****Revision date** 08/12/2020**Revision** 1**SDS number** 5508

**Hazard statements in full**

H302 Harmful if swallowed.  
H311 Toxic in contact with skin.  
H315 Causes skin irritation.  
H317 May cause an allergic skin reaction.  
H318 Causes serious eye damage.  
H319 Causes serious eye irritation.  
H332 Harmful if inhaled.  
H400 Very toxic to aquatic life.  
H411 Toxic to aquatic life with long lasting effects.  
H412 Harmful to aquatic life with long lasting effects.

This information relates only to the specific material designated and may not be valid for such material used in combination with any other materials or in any process. Such information is, to the best of the company's knowledge and belief, accurate and reliable as of the date indicated. However, no warranty, guarantee or representation is made to its accuracy, reliability or completeness. It is the user's responsibility to satisfy himself as to the suitability of such information for his own particular use.

# Product Specification

| PRODUCT DETAILS                      |  |                                  |
|--------------------------------------|--|----------------------------------|
| Product Name                         | JASMINE ABSOLUTE SAMBAC  |                                  |
|                                      |  |                                  |
| Tariff Number                        | 33012941   |                                  |
| Country of Origin                    | India  |                                  |
| INCI Name                            | Jasminum sambac  |                                  |
| Natural Status                       | We hereby declare, to the best of our knowledge and from information received from our supplier, that this product is in accordance to the requirements of Articles 3 (2) (d) of Regulation (EC) 1334/2008 and therefore can be designated as natural.<br>This product does not contain any solvents or additives. |                                  |
| Food Grade Status                    | We confirm, from information received from our supplier, that this product conforms with EU Regulations and can be used in food.   |                                  |
| Kosher Certified                     | No but can be added  |                                  |
| Halal Certified                      | Suitable   |                                  |
| GMO Declaration                      | To the best of our knowledge and from information received from our supplier, this product does not derive from genetically modified starting raw material, or additives that are derived from genetically modified organisms.   |                                  |
| Manufacturing Process                | Jasmine Sambac Absolute is obtained by the solvent extraction of flowers of Jasminum sambac and further purification by alcohol  |                                  |
| Identification                       | CAS No: 91770-14-8   | EC No: 294-797-4                 |
|                                      | FEMA: 2598   |                                  |
| PHYSICAL AND CHEMICAL CHARACTERISTIC |  |                                  |
| Appearance                           | Viscous Liquid   |                                  |
| Colour                               | Pale Reddish to Red-Brown  |                                  |
| Odour                                | Characterisitc   |                                  |
| Relative Density @ 25°C              | 0.945 - 0.982  |                                  |
| Refractive Index @ 20°C              | 1.480 - 1.516  |                                  |
| FRAGRANCE ALLERGENS                  |  |                                  |
| Benzyl Alcohol (100-51-6) 3-5%       | Benzyl Benzoate (120-51-4) 0-3%  | Benzyl Salicylate (118-58-1) <1% |
| Cinnamic Alcohol (104-54-1) <1%      | Eugenol (97-53-0) <1%  | Farnesol (4602-84-0) <1%         |
| Linalool (78-70-6) 0-8%              |  |                                  |
| FOOD ALLERGENS                       |  |                                  |
| NONE PRESENT                         |  |                                  |
| IFRA                                 |  |                                  |
| Benzyl Alcohol (100-51-6) 3-5%       | Benzyl Benzoate (120-51-4) 0-3%  | Benzyl Salicylate (118-58-1) <1% |
| Cinnamic Alcohol (104-54-1) <1%      | Eugenol (97-53-0) <1%  | Farnesol (4602-84-0) <1%         |
| STORAGE AND SHELF LIFE               |  |                                  |
| Storage                              | Store in tightly closed container with minimum headspace in a cool, dark and dry place.  |                                  |
| Shelf Life                           | 3 years unopened and stored as above.  |                                  |

**DISCLAIMER:** This information relates only to the specific material designated and may not be valid for such material used in combination with any other materials or in any process. Such information is, to the best of the Company's knowledge and belief, accurate and reliable as of the date indicated. However, no warranty, guarantee or representation is made to its accuracy, reliability or completeness. It is the users responsibility to satisfy himself as to the suitability of such information for his own particular use. Where Global Essence make a declaration that allergenic material are not present in any product, this statement is made assuming reasonable levels of detection. It is impossible to guarantee the "absolute absence" of any material. **It is the ultimate responsibility of the customer to ensure the safety of the intended final product containing this material, by carrying out additional tests if necessary.**



# Vegan and Vegetarian Statement

| IDENTIFICATION   |                         |
|--|-------------------------|
| Product:   | Jasmine Absolute Sambac |
| Cas No:  | 91770-14-8              |
| EINECS No:   | 294-797-4               |
| STATEMENT  |                         |
| <p>We, Madar Corporation Limited, from information received from our supplier, hereby declare that the material listed above is suitable for the following:</p> <p>Vegans (Excludes all animal derived products, including dairy, eggs, leather, bee products (beeswax and honey)).</p> <p>Lacto Vegetarians (Same as vegan but allows milk products and bee products.</p> <p>Ovo Vegetarians (Same as vegan but allows egg products and bee products)</p> <p>It does not contain any animal ingredients or animal by products. No animal ingredients or by products are used in the manufacturing process.</p> <p>01/02/2021</p> <p>This document represents to the best of our knowledge and from information received from our supplier. It does not release the buyer from the obligation to carry out an examination of the goods received. All uses made by the buyer are done under their own responsibility.</p> |                         |